

Release Notes
for
PQSCADA Version 3.3.1.7

BLACKBOX

Power Quality Analysis
at your fingertips





Table of Contents

IMPORTANT NOTIFICATIONS.....	3
SYSTEM REQUIREMENTS	3
NEW FEATURES.....	3
KNOWN ISSUES.....	4
DOWNLOADING	5
UPGRADING THE PQSCADA SOFTWARE	5
Uninstalling the previous PQSCADA Management Studio.....	5
Installing the New PQSCADA Management Studio.....	6
Creating a Server (Database).....	7
Importing Existing Sites and Nodes.....	9
Upgrading the Database.....	10
Recalculating the Parameters	12
TROUBLESHOOTING.....	14

Important Notifications



Please DO NOT UPGRADE to PQSCADA version 3.3.1.7 unless you also upgrade the INVESTIGATOR to version 3.0.0.xx!!! This new PQSCADA version communicates with a different protocol which is only supported from INVESTIGATOR 3.0.0.xx and up.



INVESTIGATOR 3.0.0.xx also supports previous versions of PQSCADA.

System requirements

- .NET 3.5 SP1 or higher
- Windows installer (for XP with SP2 or SP1)

New Features

- **Automatic Reports** – With this **new feature**, you may now select a report type, define its time period, and customize the report according to a given set of parameters; requires the most recent INVESTIGATOR to be installed on the PQS machine. The report types available are:
 - **NRS Power Quality Report** (South-African Standard) with output options of HTML or PDF.
 - **Chinese based Power Quality Standard Report** (EXCEL)
 - **Parameter Trend Report** per event
 - **Compliance Report** – Power Quality compliance report based on the G4K compliance configuration
- **Automatic Notification** – **New feature** that enables EMAIL, SMS and a popup window to be triggered based on some system/power related event or a task completion (i.e. Report). The notification email can have an attachment of a file (i.e. Report)
- **MAP**– **New feature** which enables you to visually manage the locations of nodes contained within a site by dragging the nodes within the Site MAP.
- **System Log** – **New Feature** that displays system log entries with advanced filtering mechanism.
- **NOW** available in **10** languages

Known issues

- In the database column the total disk size is displayed instead of the database size. (4 GB in the case using SQL express)
- Pop-up notification doesn't indicate the node name.
- In some cases, two pop-ups are generated for one event.
- In some cases no data displayed as zero
- COMTRADE standard doesn't support harmonics; therefore we recommend that the template associated with the COMTRADE task not include harmonic parameters.
- In case of no data on a selected parameter, then the resulting graph for that parameter exclusively will not display.
- When exporting PQDIF in case of no data –a folder is created even though there is no file in it.
- In PQDIF, the I/O is displayed from 0 to 15, while on the G4K and in the Investigator software, the numbering is from 1 to 16. In some rare cases, there is an exception when deleting a task.
- Due to the way the server computes the parameter summaries, some summaries will only be valid AFTER all summaries are computed.
- The PQSCADA Server may consume 100% of the CPU usage. By default the service priority is set to low, this means that if you are doing other things on the same computer you shouldn't feel any slowdowns.
- Upgrade might be impossible if the size of the database is 4GB and the SQL is Express edition.
- On some computers, the screen saver can use more than 25% of the CPU. Please consider turning off or at least use a <blank screen>.
- Limiting the amount of memory, the instance of the SQL Server may cause the installation to fail in certain circumstances, such as inserting the parameter table, and other undesired effects.
- After importing data, the size of the database can exceed the database size limit.
- In order to completely remove PQSCADA make sure to remove all existing components **before** uninstalling. Uninstall procedure does **not** remove databases and temporary data.

Downloading

- Link at:
http://www.elspec.biz/PQSCADA/PQSCADA_Server3.3.1.7.msi

Upgrading the PQSCADA Software

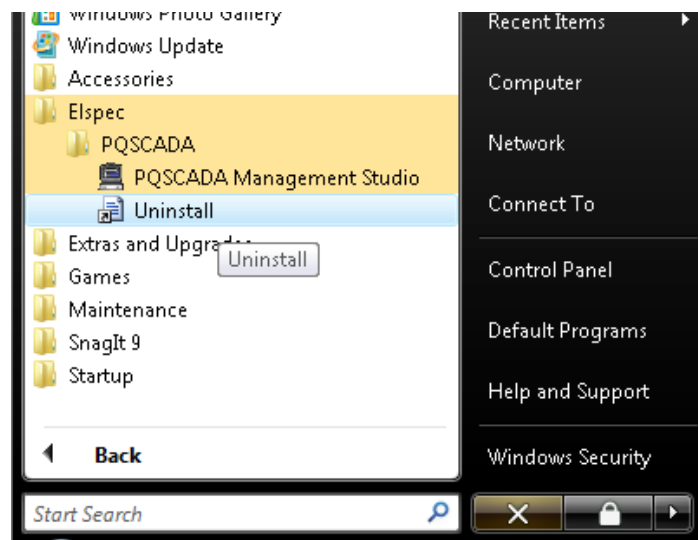
This upgrade is intended for versions 3.2.0.33 and later. If you have an older version, please refer to the User Manual.

The upgrade procedure consists of the following:

- Uninstalling the previous PQSCADA Management Studio
- Installing the new PQSCADA Management Studio
- Create Server (database) for upgrading from 3.2.0.xx
- Import existing Sites and Nodes for upgrading from 3.2.0.xx
- Upgrading the Database
- Re-calculating Parameters (optional)

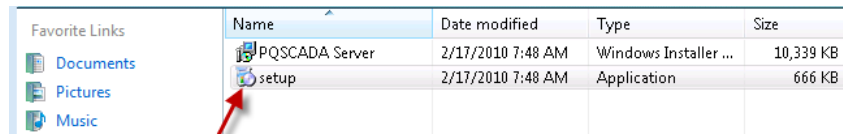
Uninstalling the previous PQSCADA Management Studio

To uninstall the previous PQSCADA Management Studio



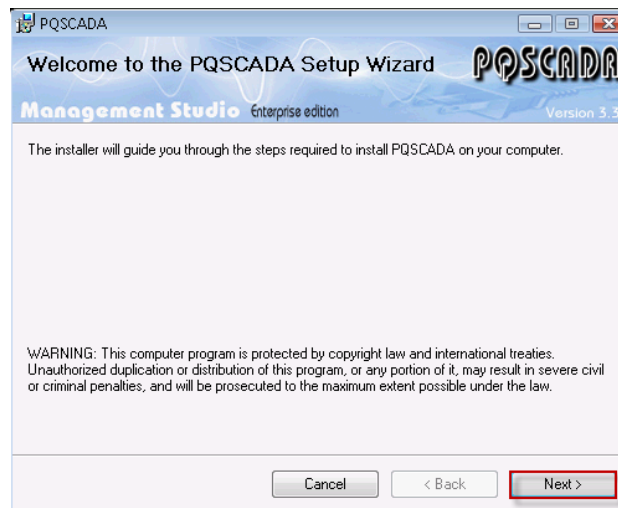
- Select Start → All Programs → Elspec → PQSCADA → Uninstall

Installing the New PQSCADA Management Studio



1. From the folder containing the files, click **Setup**.

The Welcome screen appears

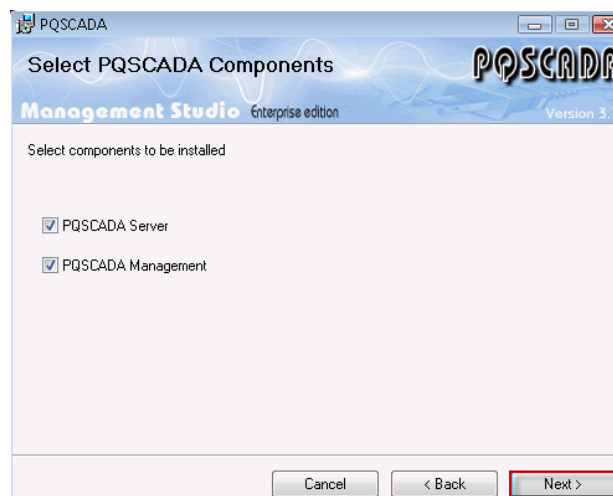


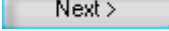
2. Click **Next >**.

The License Agreement window appears.

3. Select **I Agree**, and then click **Next >**.

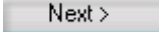
The Select PQSCADA Components screen appears



- We recommend selecting both components, then clicking  (for detailed explanation see the PQSCADA Management Studio Manual).

The Select Installation Folder screen appears

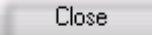


- Make desired selections, then click .

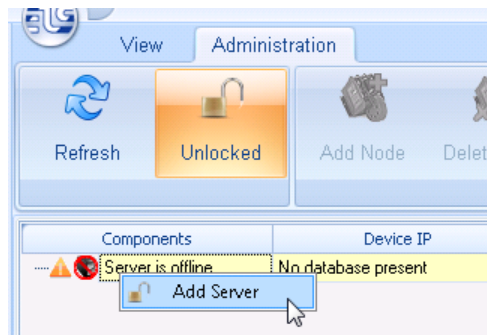
The confirmation screen appears.

- Click Next to confirm the installation.

The PQSCADA Installation commences. When complete, the Installation Complete window appears.

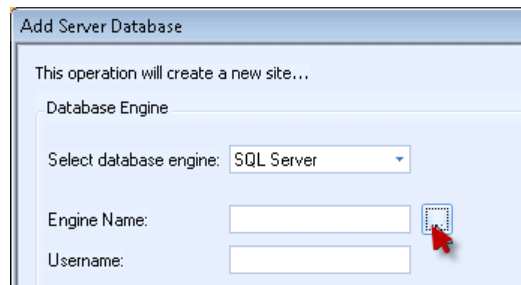
- Click  to complete the installation.

Creating a Server (Database)



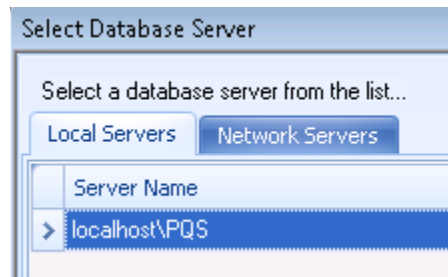
- From the PQSCADA main menu, right click at **Server is offline**, then select **Add Server**.

The Add Server Database window appears



2. Click on the Browser tab (red arrow) to select the database engine.

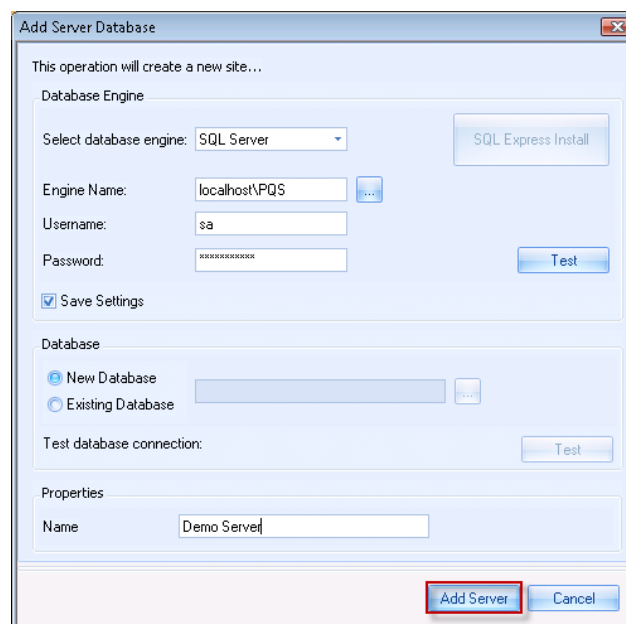
The Select Database Server window appears.



3. Select **Local Servers** tab. You may access remote databases through the **Network Servers** tab).

4. Double click the desired database (We are using an SQLEXPRESS database in our example).

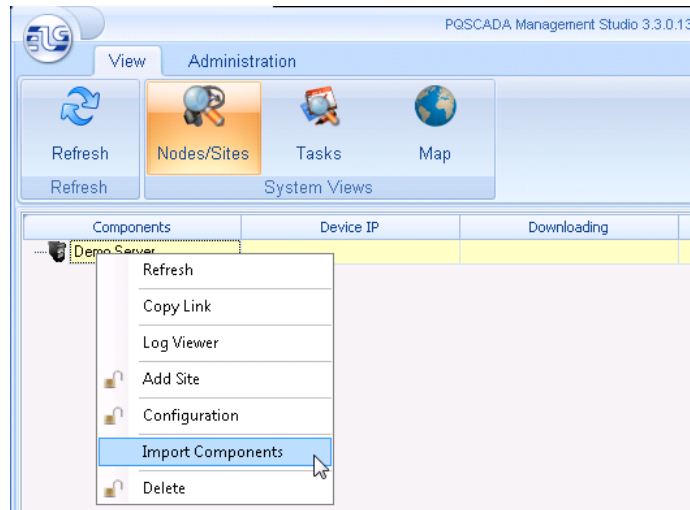
The Add Server Database window appears.



5. Enter your User name (sa) and Password (PQSpqs12345).
6. Click **Test** to verify the connection.
7. Select **Save Settings**. (recommend not mandatory)
8. Assign a user defined name for the **Server** (may be changed at any time).
9. Click **Add Server** when complete.

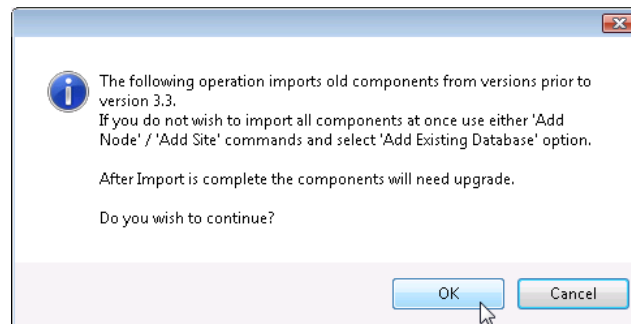
A successful **Server database** completion window appears.

Importing Existing Sites and Nodes



1. From the PQSCADA Management Studio main window, right click on the Server, then select **Import Components**.

The verification window appears

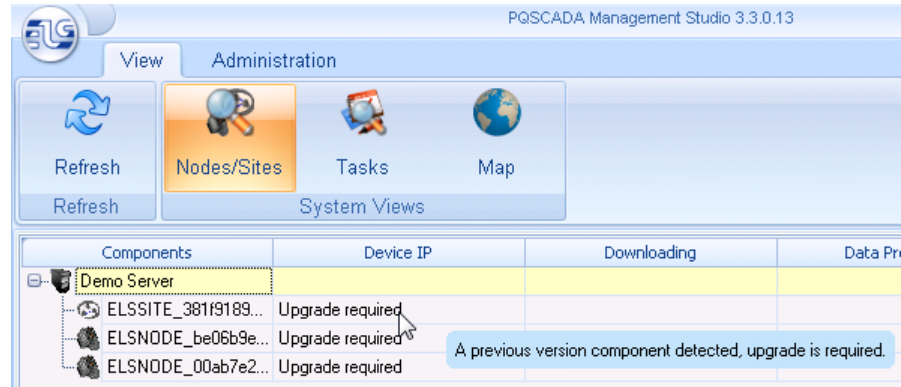


2. Click **OK** to continue.
3. A successful completion window appears.

Upgrading the Database

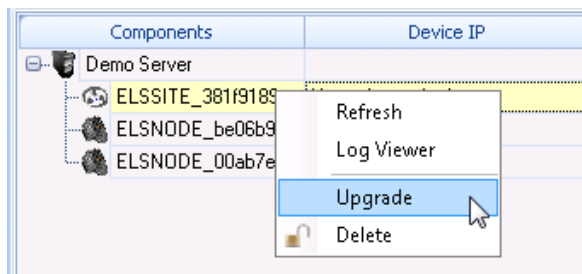
This consists of rebuilding the structure of the database only. In previous versions of PQSCADA, this step also comprised re-calculating the parameters. In this version of PQSCADA, recalculating parameters is an optional step. To upgrade the database:

The PQSCADA Management Studio window appears with a Site (Demo Server) and three Nodes from a previous PQSCADA version.



Each Node that needs to be upgraded is marked in the Device IP column (Upgrade required). Also, as the mouse is passed over a Node or Site, the message in the blue highlighted box appears that an upgrade is required.

1. Right click the Site. (For upgrade from 3.3, right click on the **Server**)
The Upgrade dialog box appears.



2. Select **Upgrade**.



*We recommend that you upgrade each Site and Node individually; however it is possible to upgrade all Sites and Nodes together simultaneously by right clicking the Server (Demo Server in our example) then selecting **Upgrade All**. After upgrading, **Refresh** is required.*

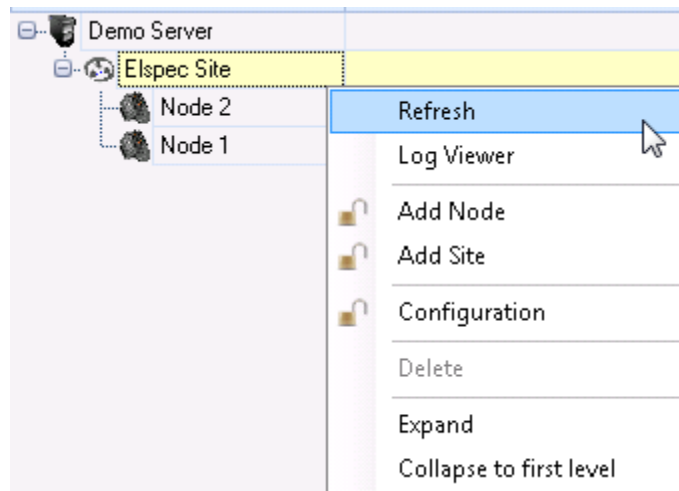
The Elspec Site has been upgraded.

Components	Device IP
<ul style="list-style-type: none"> Demo Server <ul style="list-style-type: none"> Elspec Site <ul style="list-style-type: none"> ELSNODE_00ab... Upgrade required ELSNODE_be06... Upgrade required 	

3. Upgrade each node individually in the same manner.

Components	Device IP
<ul style="list-style-type: none"> Demo Server <ul style="list-style-type: none"> Elspec Site <ul style="list-style-type: none"> ELSNODE_00ab... No IP defined ELSNODE_be06... No IP defined 	

It is possible to receive a screen as above with No IP defined.



4. To refresh the Node, right click the node, then select **Refresh**.

The Nodes are refreshed and collecting data.

Components	Device IP	Downloading
<ul style="list-style-type: none"> Demo Server <ul style="list-style-type: none"> Elspec Site <ul style="list-style-type: none"> Node 2 100.100.100.65 Scanning folders Node 1 100.100.100.103 Next attempt in 5 Minute(s). 		

Recalculating the Parameters

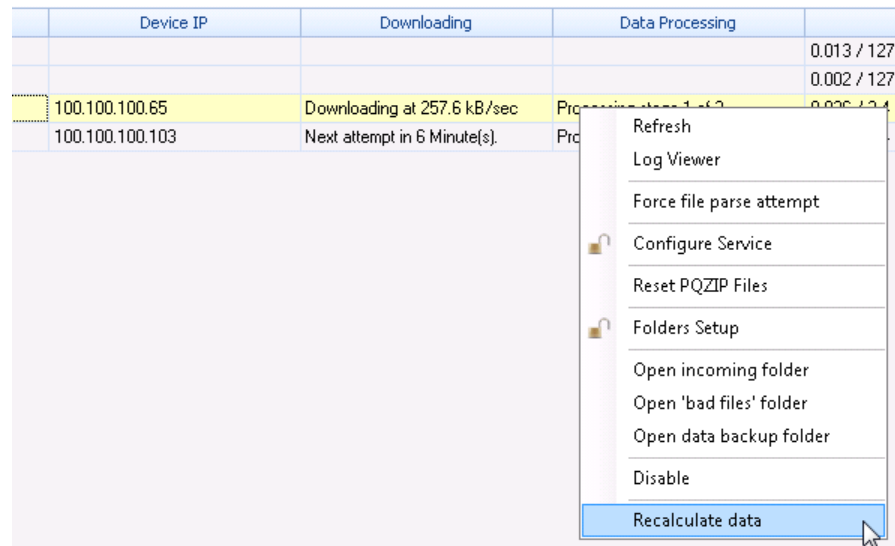
This optional step allows you to recalculate the desired parameters, if needed since the process of recalculating parameters can take a considerable amount of time (approximately two weeks to calculate one year’s worth of data). We recommend that you only perform this procedure if it is necessary.

- You have added a new parameter that needs recalculated in an existing database.
- An existing parameter that has been calculated with a new algorithm that differs from the method used on the previous version.
- In specific cases, refer to the table below. (taken from the Release notes)

Upgrading from Version to Version	Changed/Added Parameters*
3.2.0.33 > 3.3.0.xx/3.3.1.7	None
3.1.1.0->3.2.0.33	All the parameters in single phase systems Unbalance parameters Idc harmonic
3.1.4.5->3.2.0.33	Unbalance parameters Idc

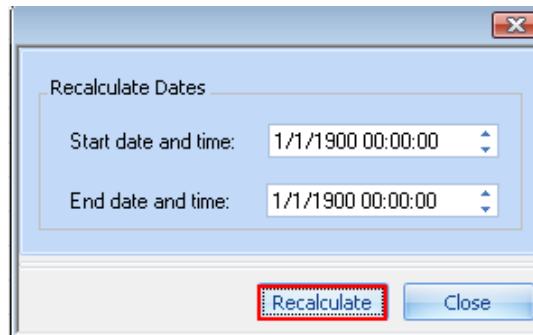
* all other parameters will have the same values after recalculation

To recalculate the parameters:



1. From the PQSCADA main menu, right click the desired **Node** in the **Data Processing** column.
2. Select **Recalculate data**.

The **Recalculate Dates** screen appears.



3. Set the desired start and end time.
4. Click **Recalculate**.

Troubleshooting

Component	Issue	Reason	Solution
Server	PQSCADA management studio doesn't respond	<ul style="list-style-type: none"> SQL server is down Network error 	Stop and start the PQS service (via the PQSCADA management studio)
	Server is offline	PQS service is not running.	Click Start in management studio à Administration à PQS server.
Other service/application is listening on port 80. Common examples – IIS, Skype.		Stop the service	
Installation	Installation error #1001	PQS service was not uninstalled (or un-installation was not successful) prior to re-installation/upgrade.	<p>Click Start → Run → CMD.</p> <p>In the command prompt window, type <i>sc delete pqs.server</i>, then press enter. Restart your computer and re-install new PQSCADA version.</p> <p>Note: in Windows Vista/7 you will need to open command prompt with elevated permissions.</p>
Report Task	Report Task is not available	The Report task works from the Investigator, and the Investigator should be installed before the PQSCADA	<ol style="list-style-type: none"> Check that the investigator installed on the same computer as the PQSCADA Stop and start the PQS service (via the PQSCADA management studio)

Component	Issue	Reason	Solution
PQZIP	Re-download files	When the PQSCADA downloads and calculates PQZIPs, it saves the processed files in the Database. If you do need to re-download them (e.g. you deleted some data from your node, and you want some of it back), you will get an error in the logger that these files have been already downloaded.	Right click on the “data processing” column of the node in question → reset PQZIP file
FTP	PQSCADA doesn't download files	After downloading all the files from a folder in the G4K FTP, the PQSCADA keeps a list of those folders so it won't try to download from it again. In some rare cases (like after deleting the PQZIPs from the G4K), the PQSCADA doesn't recognize that there are additional folders available, and therefore stops downloading.	Right click on “downloading” column of the node in question → Rescan device folders

Component	Issue	Reason	Solution
Client	The system is not responding and freezes even after refresh and PQS Service is Started/Stopped		Reset the System: Preference > System > Reset System
VDC Query	Query does not respond	The G3500 PQZIP file doesn't support VD.	Uncheck VDC parameter