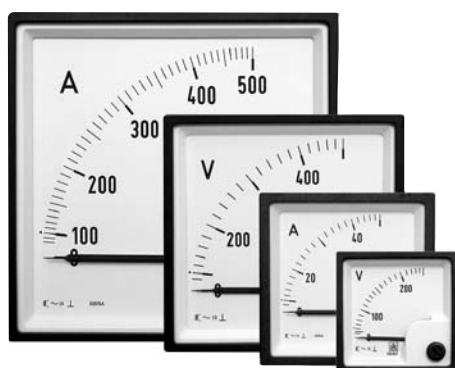


METERS FOR AC VOLTAGE OR CURRENT WITH MOVING IRON



Meters with a moving iron are intended for measurement of AC currents or voltages of frequencies from 15 Hz to 100 Hz. They measure rms values independently on the signal form of current or voltage. The accuracy class is 1.5. As the beginning of the scale is non-linear, reading from 15% of rating onwards is possible. Ammeters with rating for double, triple or even six-time value of rated current are available on request. The overload range is extremely non-linear. The scale is interchangeable



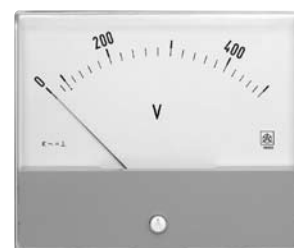
FQ 0x07



FQ 0507



FQ 3107
FQ 3207
FQ 3307



FN 0201
FN 0103

TYPE	FQ 0507	FQ 0407	FQ 0307	FQ 0207**	FQ 0107	FQ 3307	FQ 3207*	FQ 3107*	FQ 0103*	FQ 0201*
Front frame	45 x 45	48 x 48	72 x 72	96 x 96	144 x 144	72 x 72	96 x 96	144 x 144	86 x 72	115 x 96
Cutting for mounting (mm)	-	45 x 45	68 x 68	92 x 92	138 x 138	68 x 68	92 x 92	138 x 138	φ 65	φ 65
scale 90°										
Scale length (mm)	41	41	63	95	140	63	95	140	60	60
RATING										
0-100 mA...600 mA	•	•	•	•	•	-	-	-	•	•
0-1 A...10 A	•	•	•	•	•	-	-	-	•	•
0-15 A, 25 A	•	•	•	•	•	-	-	-	•	•
0-40 A	-	-	•	•	•	-	-	-	•	•
0-60 A	-	-	•	•	•	-	-	-	•	•
x A/1 A, x A/5 A	•	•	•	•	•	-	-	-	•	•
WITHOUT DIAL xA/1A, xA/5 A	•	•	•	•	•	-	-	-	-	-
0-6 V...600 V	•	•	•	•	•	•	•	•	•	•
xV/100 V, xV/110 V	•	•	•	•	•	•	•	•	•	•

FQ 3107, FQ 3307 are intended for measurement of phase and line-to-line voltages in three-phase system.

Required phase or line-to-line voltage or current is selected with a selector switch.

*A dial is not interchangeable

**Overloads of short duration on page 202.



METERS FOR AC VOLTAGE OR CURRENT WITH MOVING IRON

AMMETERS: RATINGS

mA 100, 150, 200, 250, 300, 400, 500, 600

A 1, 1.5, 2.5, 4, 6, 10, 15, 25, 40, 60

A xA/1A, xA/5A

- for connection to a current measuring transformer

VOLTMETERS: RATINGS

V 6, 10, 15, 25, 40, 60, 100, 150, 250, 300, 400, 500, 600

V .../100, .../110

- for connection to a voltage measuring transformer

Self-consumption for: - ammeters: from 0.3 VA to 1.2 VA

x/1A ...0.4 VA

x/5A ...0.7 VA

- voltmeters: from 1.2 VA to 4 VA

Meters for connection to a measuring transformer have the following standard ratings: 1 - 1.2-1.5-2-2.5-3-4-5-6-7.5 (8) and decade multiples.

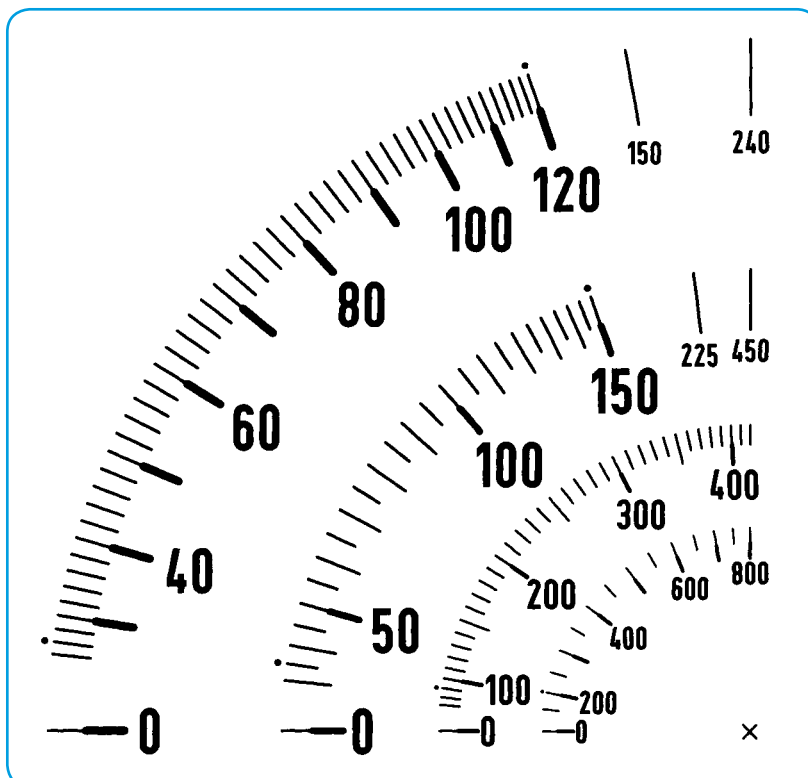
Ship version meters FQ 0407, FQ 0307, FQ 0207, FQ 0107 available on request.

Special version meters available on request; on page 170.

Dimensional drawings on pages 180, 182.

Connection diagram for FQ 3107, FQ 3207, FQ 3307 on page 201.

SCALES IN FULL SIZE FOR METERS: FQ 0x07



2 times overload

3 times overload

BIMETAL MAXIMUM CURRENT METERS



Bimetal maximum current meters with a bimetal measuring system are intended for testing thermal load of transformers, cables, electrical machines, etc. They indicate average rms current value in an 8 minutes setting period (on request 15, 20 and 30 minutes for MQ 0207 and MQ 0307).

The accuracy class is 3. The meters are provided with an interchangeable scale.

Meters 96 x 96 mm with a protecting transformer are also available on request.



MQ 0507



MQ 0207

TYPE	MQ 0507	MQ 0407	MQ 0307	MQ 0207	MQ 0107
Front frame (mm)	45 x 45	48 x 48	72 x 72	96 x 96	144 x 144
Cutting for mounting (mm)	-	45 x 45	68 x 68	92 x 92	138 x 138
scale 90°					
Scale length (mm)	37	37	63	95	140
RATING					
1.2 A, x A/1 A ¹⁾ 8 min. *	•	•	•	•	•
6 A, x A/5 A ¹⁾ 8 min. *	•	•	•	•	•

* Other setting period (15, 20 and 30 minutes) on request.

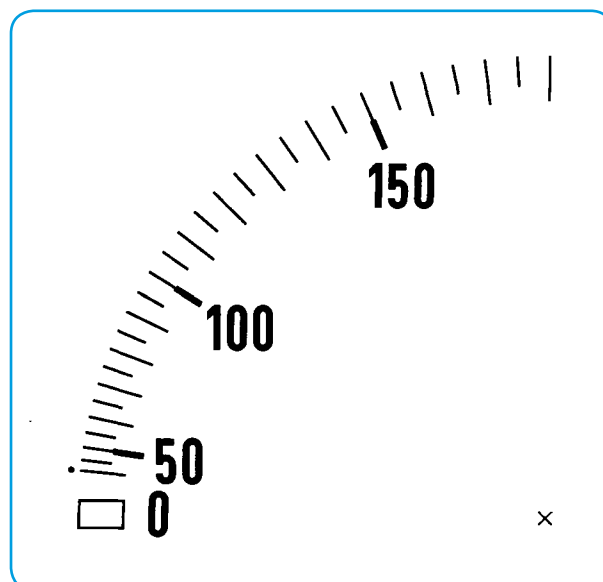
1) The rating is 20% higher than the current transformer ratio.

Self-consumption: 1.2 VA at 1.2 A; 2.2 VA at 6 A.

Dimensional drawings on pages 180, 182.

SCALE IN FULL-SIZE

For meters: MQ 0207



150/5 A - 180 A