

POINTER FREQUENCY METERS



Pointer frequency meters are intended for measurement of frequencies in the range from 45 Hz to 65 Hz. Accuracy class is 0.5.



ZQ 0207



ZQ 2207



ZQ 0507

TYPE		ZQ 0507	ZQ 0407	ZQ 0307	ZQ 0207	ZQ 0107	ZQ 2307	ZQ 2207	ZQ 2107	
Front frame (mm)		45 x 45	48 x 48	72 x 72	96 x 96	144 x 144	72 x 72	96 x 96	144 x 144	
Cutting for mounting (mm)		-	45 x 45	68 x 68	92 x 92	138 x 138	68 x 68	92 x 92	138 x 138	
		scale 90°					scale 240°			
Scale length (mm)		41	41	65	95	135	101	135	220	
MEASURING RANGE	Voltage (V)									
45...55 Hz	57, 63, 100, 110, 230, 400, 500	•	•	•	•	•	•	•	•	
55...65 Hz	57, 63, 100, 110, 230, 400, 500	•	•	•	•	•	•	•	•	
48...52 Hz	57, 63, 100, 110, 230, 400, 500	•	•	•	•	•	•	•	•	
45...65 Hz	57, 63, 100, 110, 230, 400, 500	•	•	•	•	•	•	•	•	

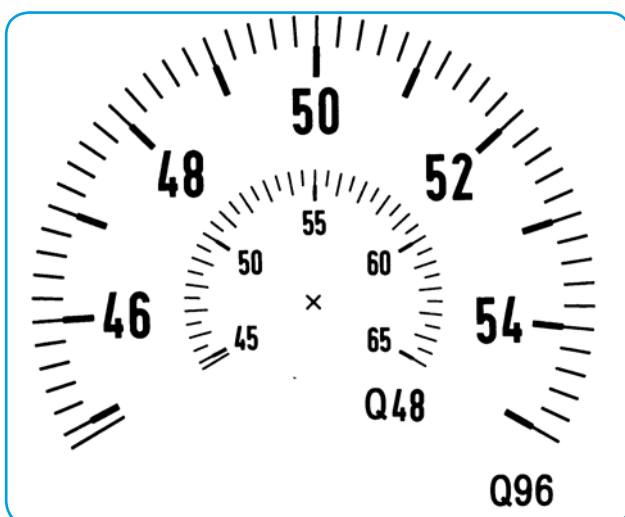
Other ratings are available on request!

Ship version of the meters ZQ 0307, ZQ 0207, ZQ 0107 are available on request.

Two-system frequency meters ZQ 1207, ZQ 1208 are on page 147. Dimensional drawings are on pages 180, 182.

SCALES IN FULL-SIZE

For meters: ZQ 2x07



DETAIL ONLY

For meters: ZQ 0x07

